

Lincoln Mark VII 1984 Fuel Filter Replacement

The purpose of the in-line fuel filter is to provide filtration to protect the small metering orifices of the injector nozzles. The filter is located downstream of the electric fuel pump and is mounted on the underbody forward of the right rear wheel well kick-up (Fig. 5).

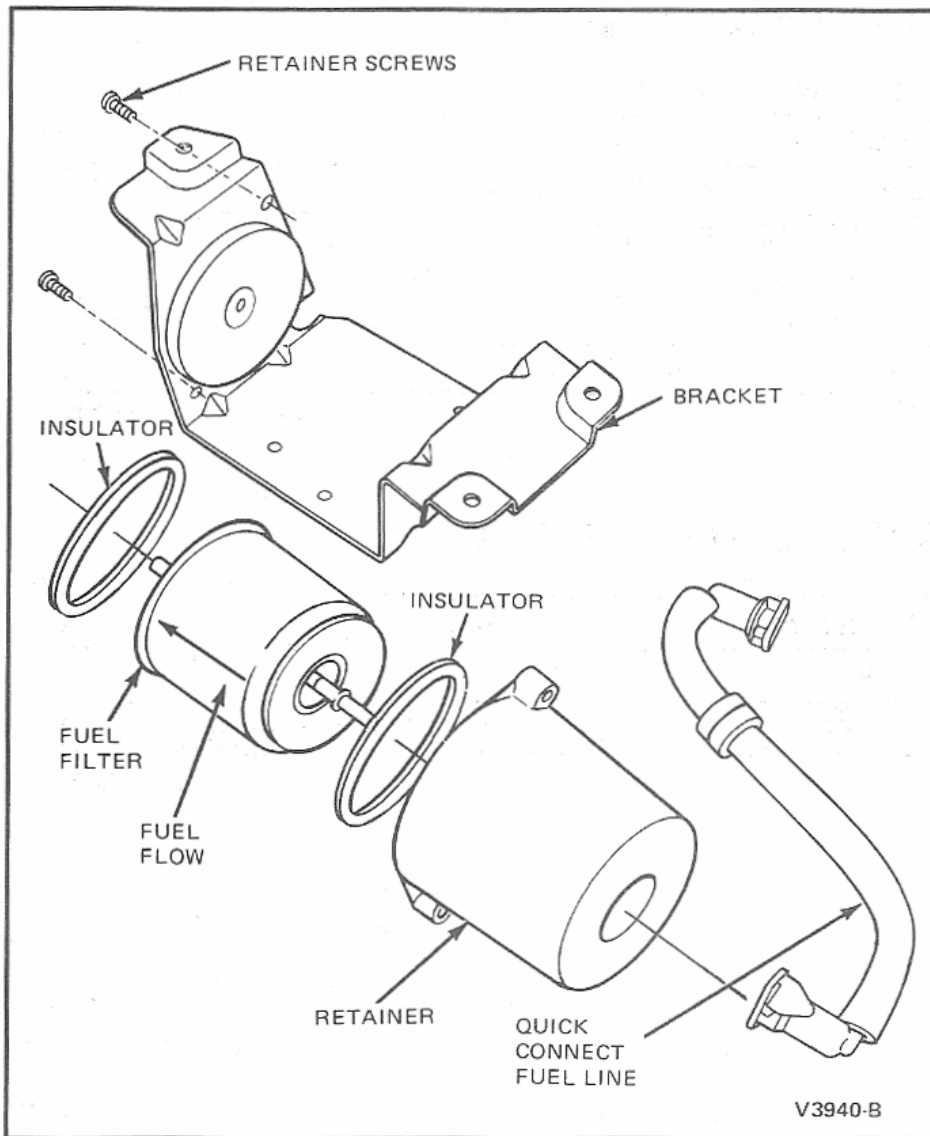


FIG. 5 Fuel Filter, In-Line

Lincoln Mark VII Fuel Filter Replacement

On vehicles equipped with in-line electric fuel pumps, the fuel filter is part of a modular assembly which also houses the fuel supply pump (Fig. 6).

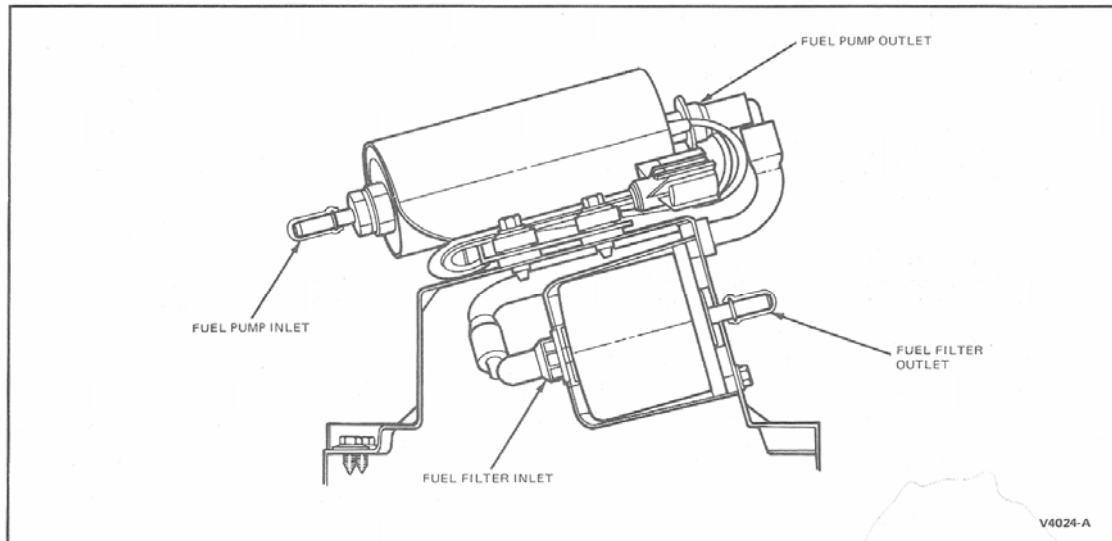


FIG. 6 Fuel Filter, In-Line and Fuel Pump Assembly—Typical

REMOVAL

1. Shut engine off. Depressurize the fuel system using Tool T8OL-9974-A or equivalent. Use caution to prevent combustion from fuel spillage.



Lincoln Mark VII Fuel Filter Replacement

2. Raise vehicle on hoist.



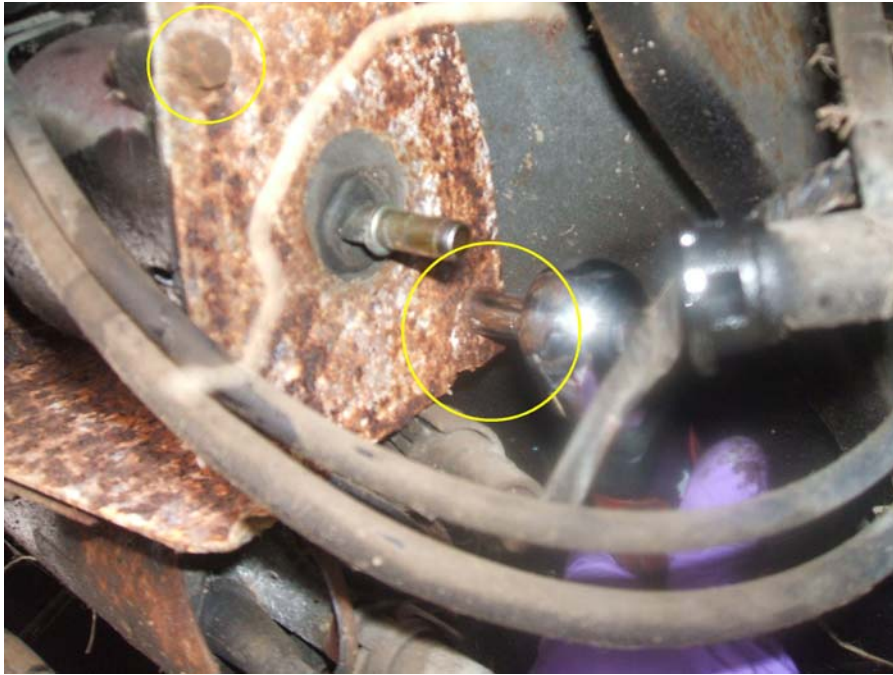
Lincoln Mark VII Fuel Filter Replacement

3. Remove the quick-connect fittings at both ends of the filter.



Lincoln Mark VII Fuel Filter Replacement

4. Remove fuel filter and retainer from metal bracket.



5. Remove rubber insulator ring from filter.

6. Remove filter from the retainer. Note that the direction of the flow arrow points to the open end of the retainer. Discard filter.



INSTALLATION

1. Place the filter into the fuel filter retainer with the flow arrow pointing out of the open end of the retainer (Fig. 5).
2. Install the rubber insulator ring. Replace insulator(s) if filter moves freely after installation of retainer.
3. Install the fuel filter retainer on metal bracket. Tighten retaining bolts to 5.8-6.8 N-m (51-60 lb-in).



Lincoln Mark VII Fuel Filter Replacement

4. Push the quick-connect fittings onto the filter ends.



5. Start engine and check for leaks. Lower vehicle.