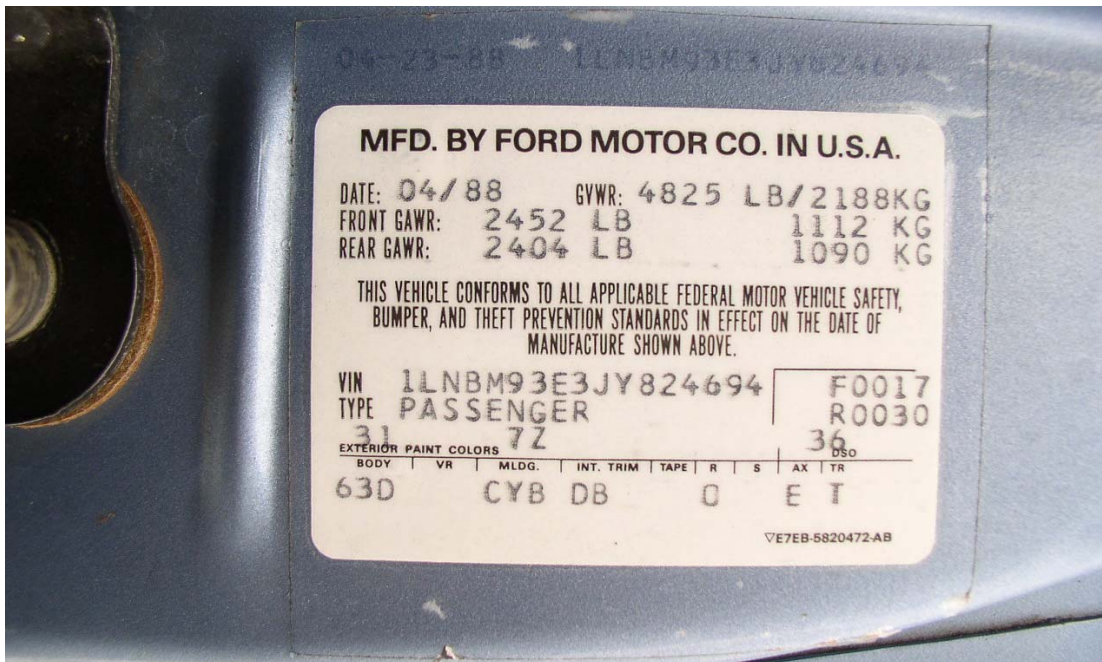


# Lincoln Mark VII Exterior Paint Colors Codes 1984 - 1992

Version 20070203jd

Colors vary GREATLY from monitor to monitor and from printer to printer. This list is only a guide and should be treated as such. Please report any inaccuracies to The Lincoln Mark VII Club.

The official color of your car when produced can be located on your build sheet or on the body of your Lincoln Mark VII. Your color code normally consists of two characters such as UA or 2T or 52. These characters are printed on a special, tamper resistant sticker in the driver's side doorframe of your car. Your color code is located **above** the words EXTERIOR PAINT COLORS. In the example below, the paint code is **31** or **Medium Regatta Blue Metallic Clearcoat**.



Lincoln Mark VII Exterior Paint Color Codes

| COLOR CODE | COLOR NAME                                  |
|------------|---|
| 11         | Light Titanium Pearl Metallic               |
| 12         | Black Clearcoat                             |
| 17         | Titanium Pearl Metallic Clearcoat           |
| 19         | Crystal Pearl Metallic Clearcoat            |
| 1C         | Black                                       |
| 1J         | Graphite Metallic Clearcoat                 |
| 1K         | Smoke                                       |
| 1L         | Crystal Pear Metallic Clearcoat             |
| 1Q         | Silver Metallic Clearcoat                   |
| 1R         | Black Clearcoat                             |
| 1T         | Dark Titanium Pearl Clearcoat               |
| 1V         | Titanium Metallic Clear Coat                |
| 1Y         | Dark Charcoal Metallic Clearcoat            |
| 24         | Medium Red                                  |
| 2H         | Medium Cabernet Red                         |
| 2M         | Vermilion Glamour Metallic                  |
| 2S         | Bright Currant Red Pearl Metallic Clearcoat |
| 2T         | Dark Canyon Red Metallic Clearcoat          |
| 2U         | Medium Red Metallic Clearcoat               |
| 2W         | Cabernet Wine Glamour                       |
| 31         | Medium Regatta Blue Metallic Clearcoat      |
| 3A         | Dark Blue Metallic Clearcoat                |
| 3B         | Medium Regatta Blue Metallic Clearcoat      |
| 3S         | Light Regatta Blue Metallic Clearcoat       |
| 3H         | Medium Blue Metallic Clearcoat              |
| 3Q         | Crystal Blue Metallic Clearcoat             |
| 3Y         | Medium Regatta Blue Metallic Clearcoat      |
| 44         | Medium Cabernet Red Clearcoat               |
| 4B         | Light Sage Metallic Clearcoat               |
| 4C         | Medium Sage Metallic Clearcoat              |
| 4F         | Dark Aegean Metallic Clearcoat              |
| 4G         | Light Aegean Metallic Clearcoat             |
| 4H         | Medium Aegean Metallic Clearcoat            |
| 4R         | Crystal Blue Frost Pearl Metallic Clearcoat |
| 4S         | Dark Titanium Pearl Metallic Clearcoat      |
| 52         | Medium Dark Cadet Blue Metallic Clearcoat   |
| 5C         | Cinnabar Pearl Metallic Clearcoat           |
| 5E         | Light Taupe Metallic Clearcoat              |
| 5H         | Dark Taupe Metallic Clearcoat               |

## Lincoln Mark VII Exterior Paint Color Codes

|    |   |
|----|---|
| 5R | Dark Cadet Blue Metallic Clearcoat            |
| 62 | Medium Sandalwood Pearl Metallic Clearcoat    |
| 63 | Light Sandalwood Pearl Metallic Clearcoat     |
| 6C | Light Wheat                                   |
| 6E | Wheat Metallic Clearcoat                      |
| 6G | Medium Dark Wheat Metallic Clearcoat          |
| 6K | Light Sandalwood Clearcoat                    |
| 6Z | Pastel French Vanilla                         |
| 78 | Shadow Blue Metallic Clearcoat                |
| 7A | Spinnaker Blue                                |
| 7C | Deep Shadow Blue Metallic Clearcoat           |
| 7F | Twilight Blue Pearl Metallic Clearcoat        |
| 7K | Dark Shadow Blue Metallic Clearcoat           |
| 8B | Electric Current Red Metallic Clearcoat       |
| 8D | Deep Sandalwood Metallic Clearcoat            |
| 8L | Sand Beige                                    |
| 8M | Sand Beige Metallic Clearcoat                 |
| N  | Rose Quartz Pearl Metallic Clearcoat          |
| 8Q | Light Desert Tan                              |
| 8R | Light Sandalwood                              |
| 8S | Pastel Desert Tan                             |
| 8T | Medium Sandalwood Metallic Clearcoat          |
| 8W | Dark Sabel Metallic Clearcoat                 |
| 8U | Medium Sand Beige Metallic Clearcoat          |
| 8Z | Sandalwood Metallic Clearcoat                 |
| 91 | Pastel Cadet Blue Metallic Clearcoat          |
| 9G | Midnight Currant Red Pearl Metallic Clearcoat |
| 9J | Pastel Desert Tan Metallic Clearcoat          |
| 9L | Oxford White                                  |
| 9P | Dark Cabernet Pearl Metallic Clearcoat        |
| 9S | Walnut Metallic Clearcoat                     |
| A3 | Pastel Adobe Clearcoat                        |
| AC | Medium Bisque Metallic Clearcoat              |
| AD | Biscue Frost Metallic Clearcoat               |
| AK | Biscue Frost Metallic Clearcoat               |
| AP | Sandalwood Frost Metallic Clearcoat           |
| AW | Medium Sandalwood Metallic Clearcoat          |
| BG | Medium Titanium Metallic                      |
| CD | Woodrose Metallic Clearcoat                   |
| DD | Mocha Frost Metallic Clearcoat                |
| ED | Bright Currant Red Metallic Clearcoat         |

## Lincoln Mark VII Exterior Paint Color Codes

|    |   |
|----|---|
| EE | Midnight Currant Red Pearl Metallic Clearcoat |
| EG | Electric Currant Red Metallic Clearcoat       |
| ER | Dark Cranberry Metallic Clearcoat             |
| EW | Light Cranberry Metallic Clearcoat            |
| EX | Medium Cranberry Metallic Clearcoat           |
| KB | Medium Amethyst Frost Metallic Clearcoat      |
| MD | Crystal Blue Frost Metallic Clearcoat         |
| ME | Medium Regatta Blue Metallic Clearcoat        |
| MK | Twilight Blue Metallic Clearcoat              |
| PA | Deep Jewel Green Metallic Clearcoat           |
| UA | Black Ebony Clearcoat                         |
| YG | Medium Titanium Metallic Clearcoat            |
| YN | Silver Metallic Clearcoat                     |
| YO | Oxford White                                  |
| YU | Dark Titanium Metallic Clearcoat              |
| YX | Titanium Frost Metallic Clearcoat             |
| YZ | Oxford White Clearcoat                        |